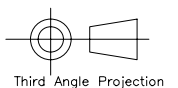
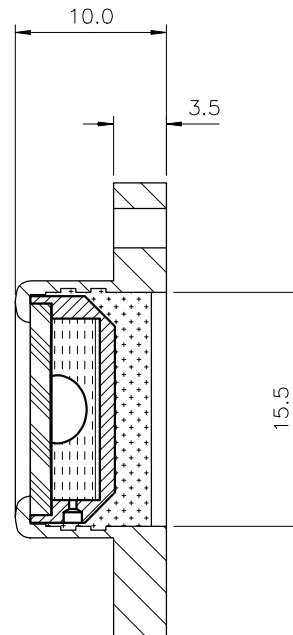
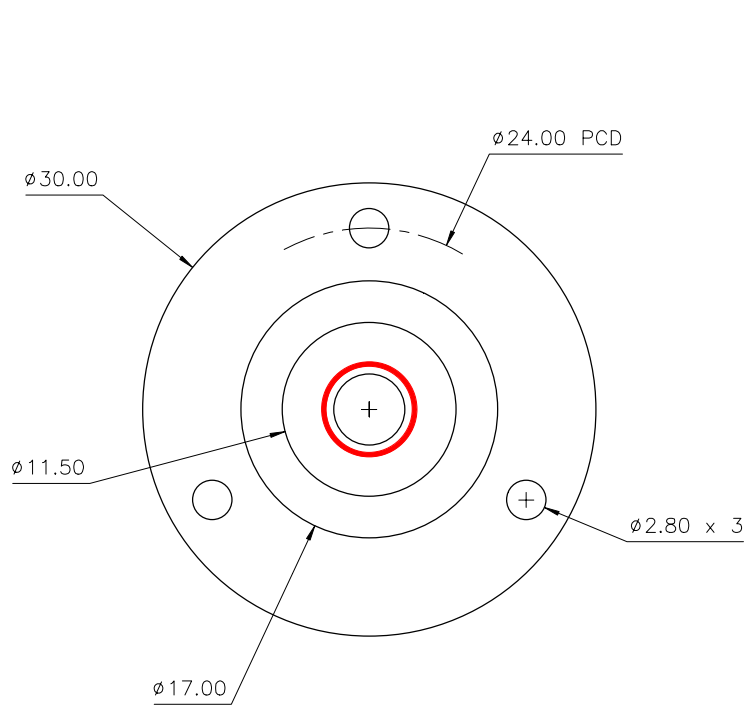


Used On	Scale 2:1	Title CG30 Circular level, $\phi 30$	Drawing Number 3103/1	
			Issue	Amendment
				Date

Note :

Temp. Range: -40 to $+70^{\circ}\text{C}$
 Centre Ring :
 Outside diameter : $\phi 6.3\text{mm}$
 Colour : Red
 Printed on inside surface of glass top lens
 Bubble : $\phi 4.7 \pm 0.25$ ($@20^{\circ}\text{C}$)
 Backing: Silver

Part Number	Sensitivity	Finish
CG30	$20'/2\text{mm}$	Chrome plated
CG30/7	$7'/2\text{mm}$	Chrome plated
CG30B	$20'/2\text{mm}$	Black anodised
CG30B/7	$7'/2\text{mm}$	Black anodised



Finish See Table	Tolerances Unless Stated Otherwise (mm Units)	XX. +/- 1.0	Material Aluminium housing, glass vial	Level Developments Ltd	
		XX.X +/- 0.25		Drawn By JHL	Date 30/10/2009
		XX.XX +/- 0.1			