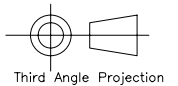
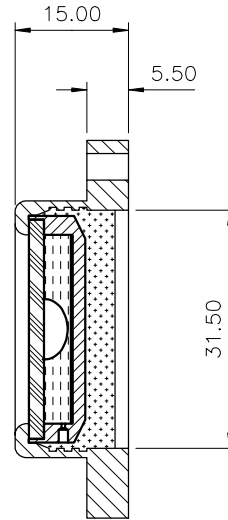
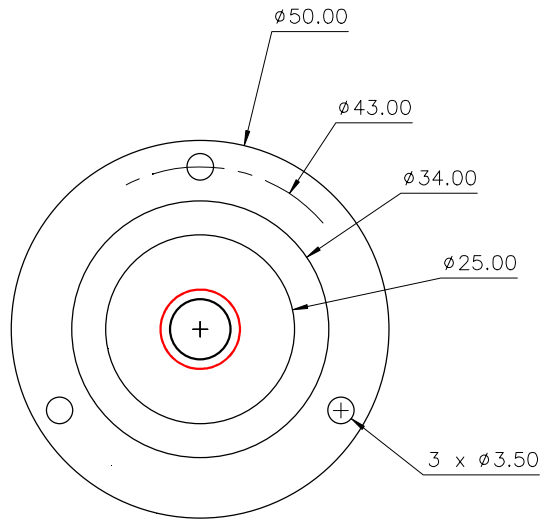


Used On	Scale 1:1	Title CG50 circular level, $\phi 50$, sens 12'/2mm	Drawing Number 3106/1	
			Issue	Amendment
				Date

Note :

Sensitivity : 12'/2mm, r=573mm
 Temp. Range: -40 to +70°C
 Centre Ring :
 Outside diameter : $\phi 10.8$ mm
 Colour : Red
 Printed on inside surface of glass top lens
 Bubble : $\phi 8.0 \pm 0.3$ (@20°C)
 Backing: White

Part Number	Sensitivity	Finish
CG50	12'/2mm	Chrome plated
CG50B	12'/2mm	Black anodised



Finish See Table	Tolerances Unless Stated Otherwise (mm Units)	XX. +/- 1.0	Material Aluminium housing with glass vial	Level Developments Ltd	
		XX.X +/- 0.25		Drawn By JHL	Date 04/11/2009
		XX.XX +/- 0.1			