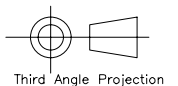
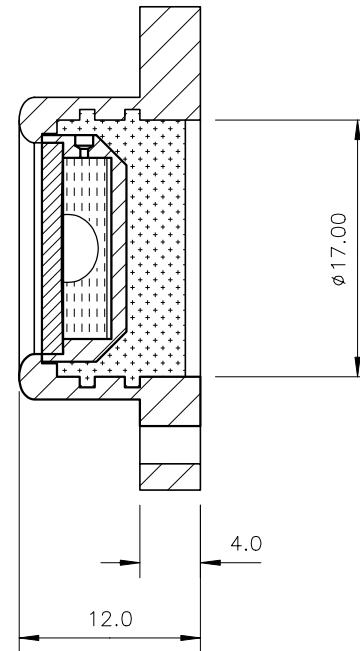
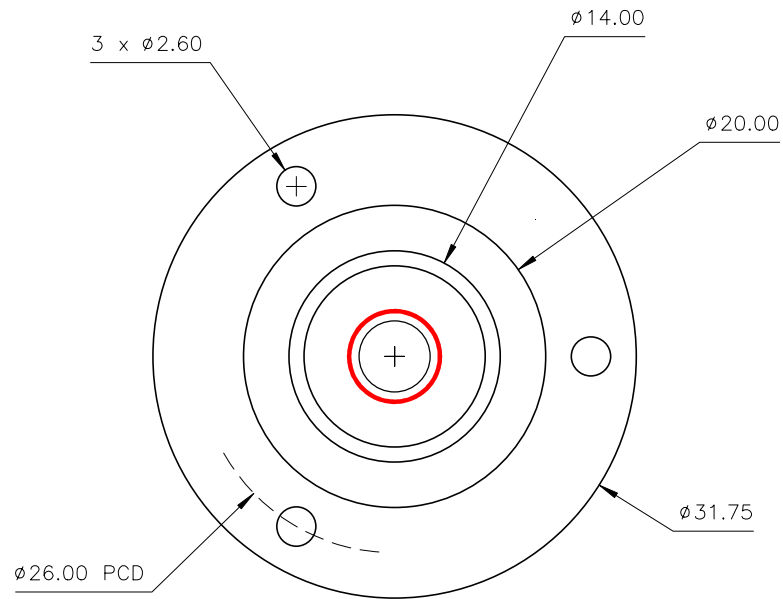


Used On	Scale 2:1	Title CG32 Circular level, $\phi 31.75$	Drawing Number 3114/1	
			Issue	Amendment
				Date

Note :

Temp. Range: -40 to $+70^{\circ}\text{C}$
 Centre Ring :
 Outside diameter : $\phi 6.3\text{mm}$
 Colour : Red
 Printed on inside surface of glass top lens
 Bubble : $\phi 4.7 \pm 0.25$ ($@20^{\circ}\text{C}$)
 Backing: Silver

Part Number	Sensitivity	Finish
CG32	20'/2mm	Chrome plated
CG32/7	7'/2mm	Chrome plated
CG32B	20'/2mm	Black anodised
CG32B/7	7'/2mm	Black anodised



Finish See Table	Tolerances Unless Stated Otherwise (mm Units)	XX. +/- 1.0	Material Aluminium housing, glass vial	Level Developments Ltd	
		XX.X +/- 0.25		Croydon, Surrey, CR0 2DN t.+44 (0)20 8684 1400	
	XX.XX +/- 0.1	Drawn By JHL	Date 30/10/2009		