

USED ON	SCALE 2:1	TITLE Circular level , Ø12 x 5.4mm, 50'/2mm	DRAWING NUMBER 5801/2		
---------	--------------	--	--------------------------	--	--

ISSUE	AMENDMENT	DATE
0	Drawing opened for production	

Note :

Sensitivity : 50'/2mm, r=138mm

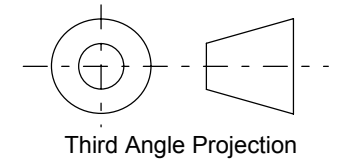
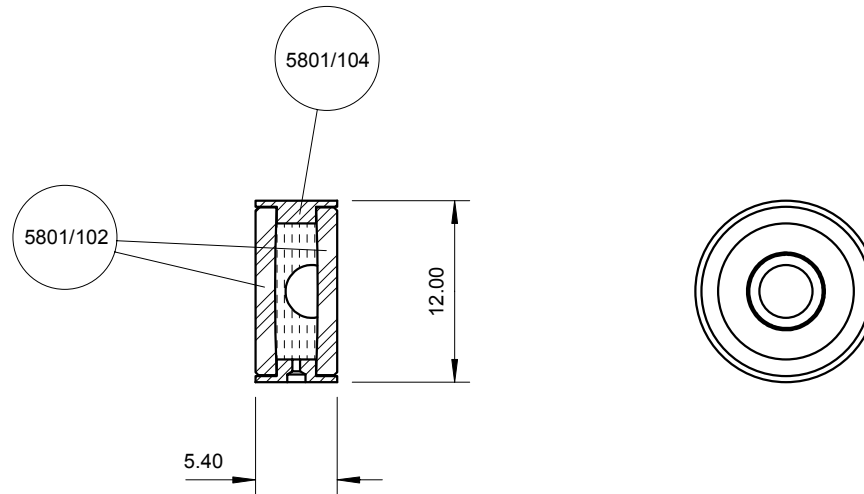
Centre Ring :

Outside diameter : Ø5.3mm

Colour : Black

Printed on inside surface of glass top lens

Bubble : Ø3.5 ±0.25 (@20°C)



FINISH Black anodise	TOLERANCES UNLESS STATED OTHERWISE mm UNITS	<b>XX.</b> +/- 1.0 <b>XX.X</b> +/- 0.25 <b>XX.XX</b> +/- 0.1	MATERIAL Al body, glass top and bottom disc	<b>LEVEL DEVELOPMENTS</b> Croydon, Surrey, CRO 2DN	
			DRAWN BY M. Jones		