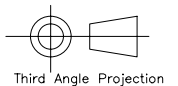
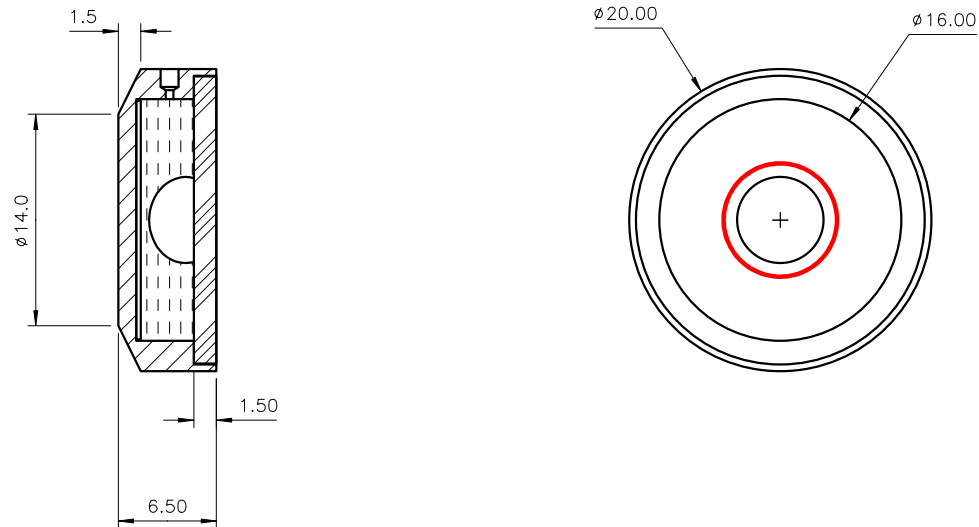


Used On	Scale 2:1	Title MV20 Type Circular Vial, sens. 12'	Drawing Number 5805/1
---------	--------------	---	--------------------------

Issue	Amendment	Date
-------	-----------	------

Note:

-----  
Sensitivity : 12'/2mm bubble movement ( $\pm 2'$ )  
Centre Ring :  $\phi 7.80\text{mm} \pm 0.1$  external diameter  
Colour : Red  
Line Thickness : 0.3mm  
Bubble :  $\phi 5.7 \pm 0.3$  @20°C



Finish Etch and black anodise to LD process specification	Tolerances Unless Stated Otherwise (mm units)	XX. ±1.0	Material Aluminium housing, glass lens	Level Developments Ltd	
		XX.X ±0.25		Drawn By Martin Jones	Date 05/02/2009
		XX.XX ±0.1			