

Used On 5801/1	Scale 2:1	Title Circular level , Ø12 x 5mm, 50'/2mm	Drawing Number 3041/1
-------------------	--------------	--	--------------------------

Issue	Amendment	Date
-------	-----------	------

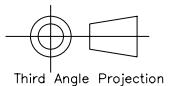
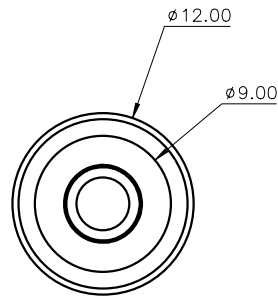
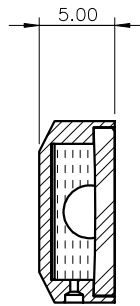
Note :

Sensitivity : 50'/2mm, r=138mm  
Temp. Range: -40 to +70°C

Centre Ring :

Outside diameter : Ø5.3mm  
Colour : Black  
Printed on inside surface of glass top lens

Bubble : Ø3.5 ±0.25 (@20°C)  
Backing: White



Third Angle Projection

Finish Black anodised	Tolerances Unless Stated Otherwise (mm units)	XX. ±1.0 XX.X ±0.25 XX.XX ±0.1	Material	Aluminium housing, glass disc	
			Drawn By	JHL	Date
			Level Developments Ltd Croydon, Surrey, CR0 2DN t.+44 (0)20 8684 1400		