

Used On 5802/1	Scale 2:1	Title Circular level , Ø12 x 5mm, 25'/2mm	Drawing Number 3043/1	
-------------------	--------------	--	--------------------------	--

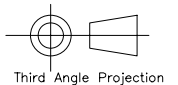
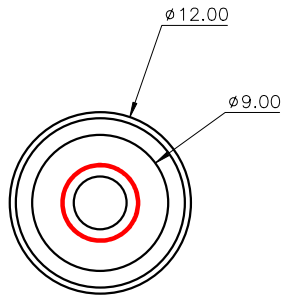
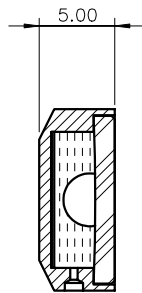
Issue	Amendment	Date
-------	-----------	------

Note :

Sensitivity : 25'/2mm, r=276mm
Temp. Range: -40 to +70°C

Centre Ring :
Outside diameter : Ø5.3mm
Colour : Red
Printed on inside surface of glass top lens

Bubble : Ø3.5 ±0.25 (@20°C)
Backing: White



Third Angle Projection

Finish Black anodised	Tolerances Unless Stated Otherwise (mm units)	XX. ±1.0 XX.X ±0.25 XX.XX ±0.1	Material Aluminium housing, glass disc	Level Developments Ltd	
			Drawn By JHL	Date 26/01/2009	Croydon, Surrey, CR0 2DN t.+44 (0)20 8684 1400