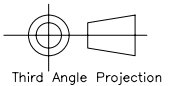
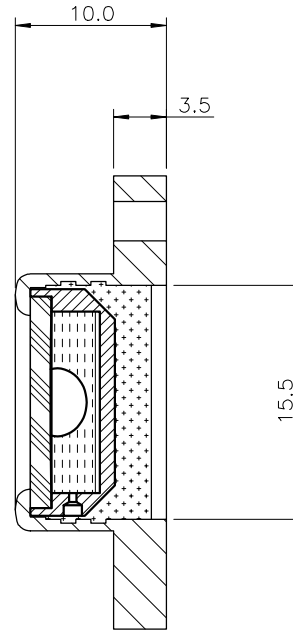
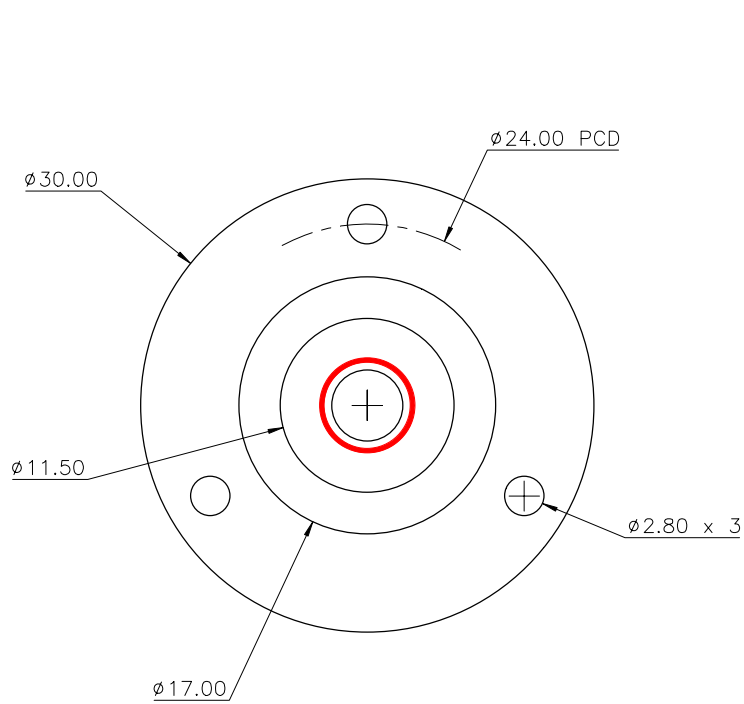


Used On	Scale 2:1	Title CG30 Circular level, $\phi 30$	Drawing Number 3103/1	
			Issue	Amendment
				Date

Note :

Temp. Range:  $-40$  to  $+70^{\circ}\text{C}$   
 Centre Ring :  
 Outside diameter :  $\phi 6.3\text{mm}$   
 Colour : Red  
 Printed on inside surface of glass top lens  
 Bubble :  $\phi 4.7 \pm 0.25$  ( $@20^{\circ}\text{C}$ )  
 Backing: Silver

Part Number	Sensitivity	Finish
CG30	$20'/2\text{mm}$	Chrome plated
CG30/7	$7'/2\text{mm}$	Chrome plated
CG30B	$20'/2\text{mm}$	Black anodised
CG30B/7	$7'/2\text{mm}$	Black anodised



Finish See Table	Tolerances Unless Stated Otherwise (mm Units)	XX. +/- 1.0	Material Aluminium housing, glass vial	Level Developments Ltd	
		XX.X +/- 0.25		Croydon, Surrey, CR0 2DN t.+44 (0)20 8684 1400	
	XX.XX +/- 0.1	Drawn By JHL	Date 30/10/2009		