

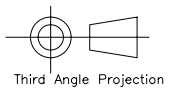
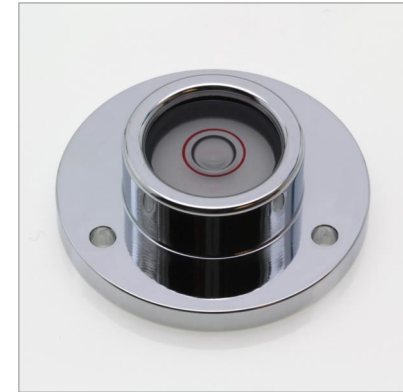
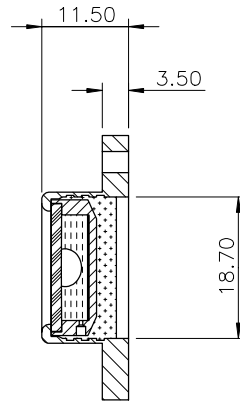
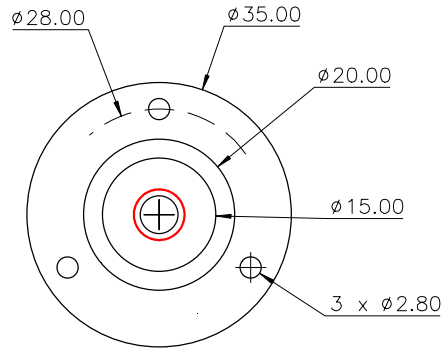
Used On CG35	Scale 1:1	Title CG35 circular level, $\phi 35$, sens 10'/2mm	Drawing Number 3104/1	
-----------------	--------------	--	--------------------------	--

Issue	Amendment	Date
-------	-----------	------

Note :

Sensitivity : 10'/2mm, r=687mm
 Temp. Range: -40 to +70°C
 Centre Ring :
 Outside diameter : $\phi 7.3$ mm
 Colour : Red
 Printed on inside surface of glass top lens
 Bubble : $\phi 5.0 \pm 0.3$ (@20°C)
 Backing: White

Part Number	Sensitivity	Finish
CG35	10'/2mm	Chrome plated
CG35B	10/2mm	Black anodised



Finish See Table	Tolerances Unless Stated Otherwise (mm Units)	XX. +/- 1.0	Material Aluminium housing with glass vial	Level Developments Ltd	
		XX.X +/- 0.25		Drawn By JHL	Date 04/11/2009
		XX.XX +/- 0.1			