

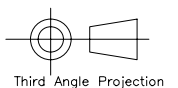
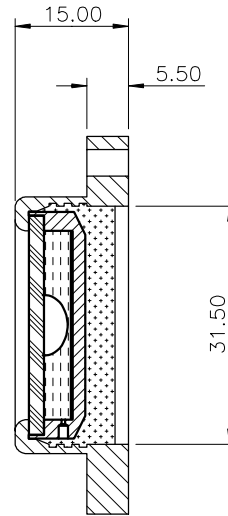
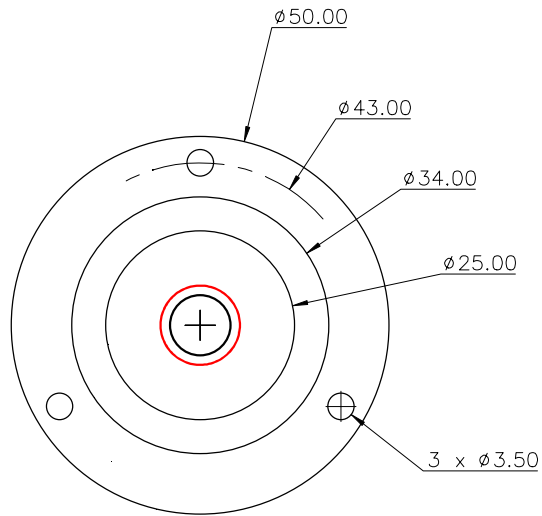
Used On	Scale 1:1	Title CG50 circular level, $\phi 50$, sens 12'/2mm	Drawing Number 3106/1
---------	--------------	--	--------------------------

Issue	Amendment	Date
-------	-----------	------

Note :

Sensitivity : 12'/2mm, r=573mm
 Temp. Range: -40 to +70°C
 Centre Ring :
 Outside diameter : $\phi 10.8$ mm
 Colour : Red
 Printed on inside surface of glass top lens
 Bubble : $\phi 8.0 \pm 0.3$ (@20°C)
 Backing: White

Part Number	Sensitivity	Finish
CG50	12'/2mm	Chrome plated
CG50B	12'/2mm	Black anodised



Third Angle Projection

Finish See Table	Tolerances Unless Stated Otherwise (mm Units)	XX. +/- 1.0 XX.X +/- 0.25 XX.XX +/- 0.1	Material Aluminium housing with glass vial	Date 04/11/2009	Level Developments Ltd Croydon, Surrey, CR0 2DN t.+44 (0)20 8684 1400
	Drawn By JHL				