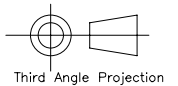
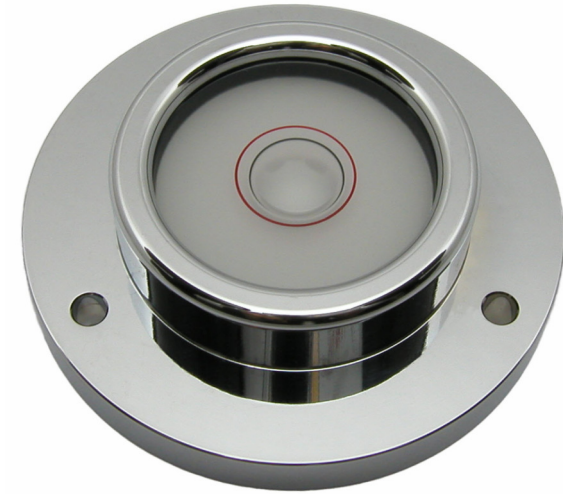
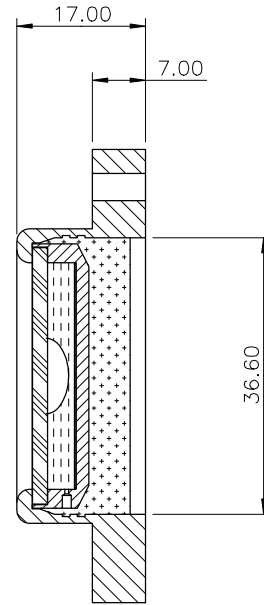
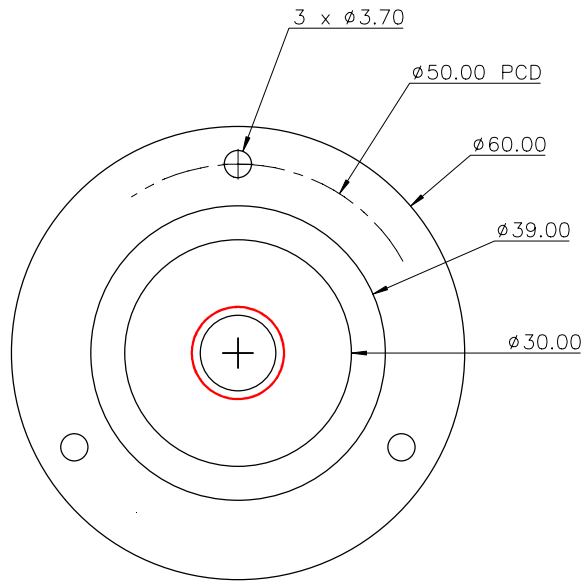


Used On CG60	Scale 1:1	Title CG60 circular level, $\phi 60$ , sens 10'/2mm	Drawing Number 3107/1	
			Issue	Amendment
				Date

Note :

Sensitivity : 10'/2mm, r=687mm  
 Temp. Range: -40 to +70°C  
 Centre Ring :  
 Outside diameter :  $\phi 12.8$ mm  
 Colour : Red  
 Printed on inside surface of glass top lens  
 Bubble :  $\phi 10.0 \pm 0.5$  (@20°C)  
 Backing: White

Part Number	Sensitivity	Finish
CG60	10'/2mm	Chrome plated
CG60B	10'/2mm	Black anodised



Finish See Table	Tolerances Unless Stated Otherwise (mm Units)	XX. +/- 1.0	Material Aluminium housing with glass vial	Level Developments Ltd	
		XX.X +/- 0.25		Drawn By JHL	Date 04/11/2009
		XX.XX +/- 0.1			