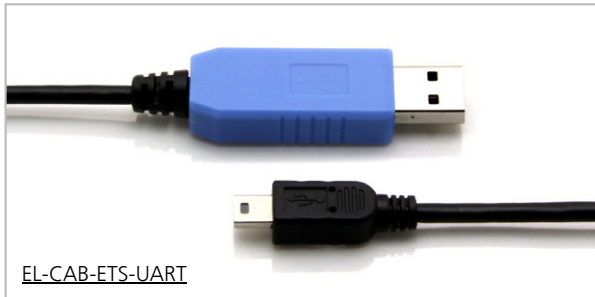


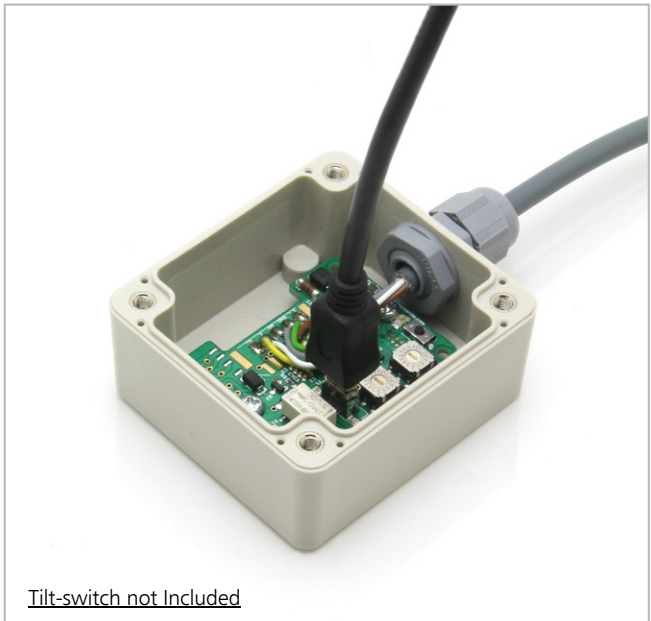


Description

The EL-CAB-ETS-UART can be used to modify the filter frequency and delay settings of the ETS series tilt switches. All ETS tilt switches with serial numbers greater than 14800 can be user-modified using this cable with our free software (see below). The cable can be purchased from our website using this link: [Here](#).



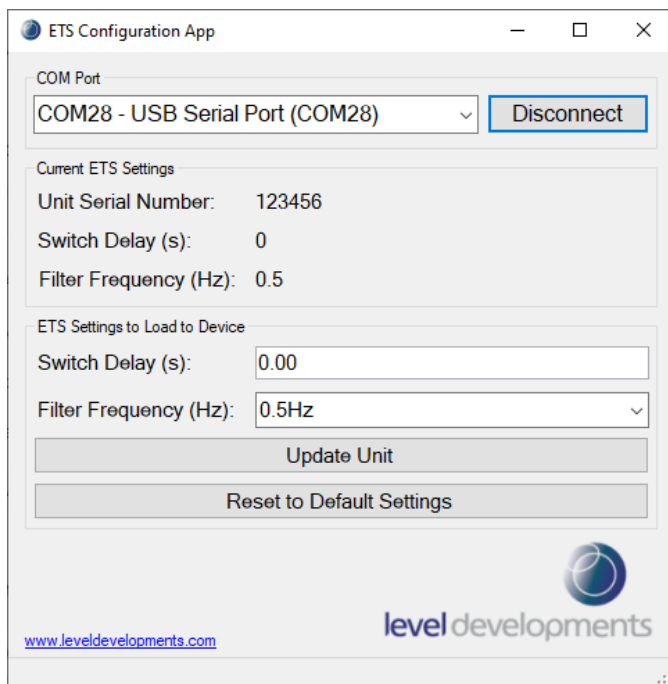
EL-CAB-ETS-UART



Tilt-switch not Included

Free Configuration Software for Windows

A free Windows PC application enables user customisation of the delay and filter frequency settings of ETS tilt switches. It is compatible with Windows 10 and works with 32 or 64 bit systems. It also requires .NET framework V4.7.2 or higher and will prompt you to download this from Microsoft if this isn't already installed. The delay setting adjusts the period that the relay activation is postponed after the tilt threshold has been reached. The filter frequency setting controls a 2nd order Besel low pass filter which is selectable between 0.125Hz, 0.25Hz, 0.5Hz, 1Hz, 2Hz, 4Hz, 8Hz and 16Hz. Slower filter settings (e.g. 0.125Hz) will take the longest to respond to movement but will also have the most stability (and vice versa). Slow filter settings are commonly used to reduce the effects of vibration. These settings can only be transferred using the "EL-CAB-ETS-UART" cable from Level Developments. The ETS tilt switch & cable do not feature a USB interface.



Using the Software:

- 1) Download and install the software from: https://www.leveldevelopments.com/wp/wp-content/uploads/software/ETS_Configuration_App.zip
- 2) Remove the Lid from the tilt switch by releasing the 4 top screws. Connect one end of the EL-CAB-ETS-UART cable to the ETS's circuit board (see image above) and the other end to the PC/Laptop. Note: the tilt switch is now powered with 5V, don't touch the circuit board while the cable is installed.
- 3) Open the ETS configuration App, choose the correct COM port & click "connect". The serial no. (& existing settings) will display to indicate a successful connection.
- 4) Adjust the "Switch Delay" & "Filter Frequency" settings as required, then click on "Update Unit". You can also "Restore to factory defaults" if needed.

This software is provided 'as-is', without any express or implied warranty. In no event will the authors be held liable for any damages arising from the use of this software.