

Hello Angles...



A First Use Guide to the HPS Product Series:

RS485 Interface with
LD Standard Communication Protocol.

Who Is This Guide For?

The purpose of this guide is to show the correct procedure for connecting and using the HPS inclinometer with a Windows PC for the first time.

This document can be followed by users of all skill levels including absolute beginners.

What products can I apply these instructions to?

This guide can be used for any HPS products that feature the **RS232** interface option. All applicable part numbers will start with “**HPS**” and end with “**485**” e.g. “HPS-XX-X-**485**”



Note: If you are using a “**HPS...232**” or a “**HPS...MOD**” product please search for your full part number on our website and download the document that specifically applies to your device as shown below:



Additional Information:



Take care while making all connections. To avoid damaging your product do not allow any wires to make contact with anything you do not intend (especially a source of power).

Once your connections have been made and the unit is responding correctly, please refer to the product datasheet for the full command list(s) and more information about the communication protocol.

Step 1: Ensure You Have a Working COM Port (Hardware).

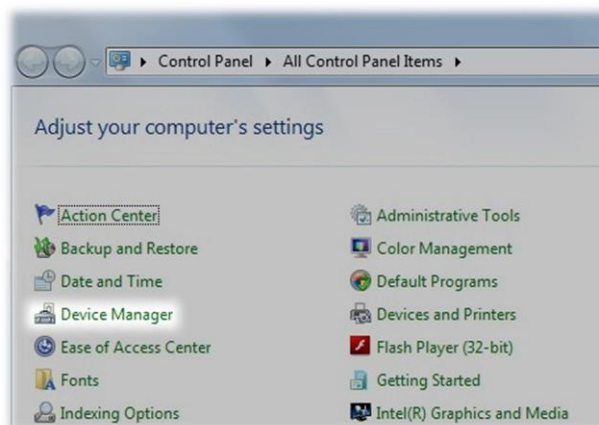
To communicate with the inclinometer you'll need a USB to RS485 adapter that's configured for or natively 2-wire (half duplex), these can be found inexpensively online and for this guide we've used the "Hjelmslund USB485-STISO" product:



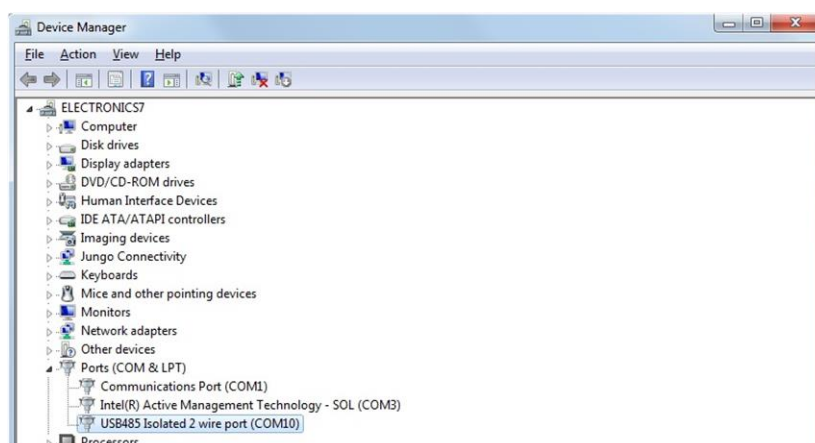
Hjelmslund have now replaced this product with the USB485-STIXL the only difference to our model is the larger screw terminals.

Step 2: Ensure You Have a Working COM Port (Software):


On your computer go to "Device Manager" which can be accessed via the control panel:



Follow the manufacturer's instructions to install your driver and check that it has installed properly as shown below:

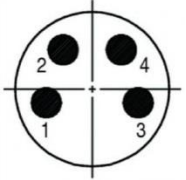


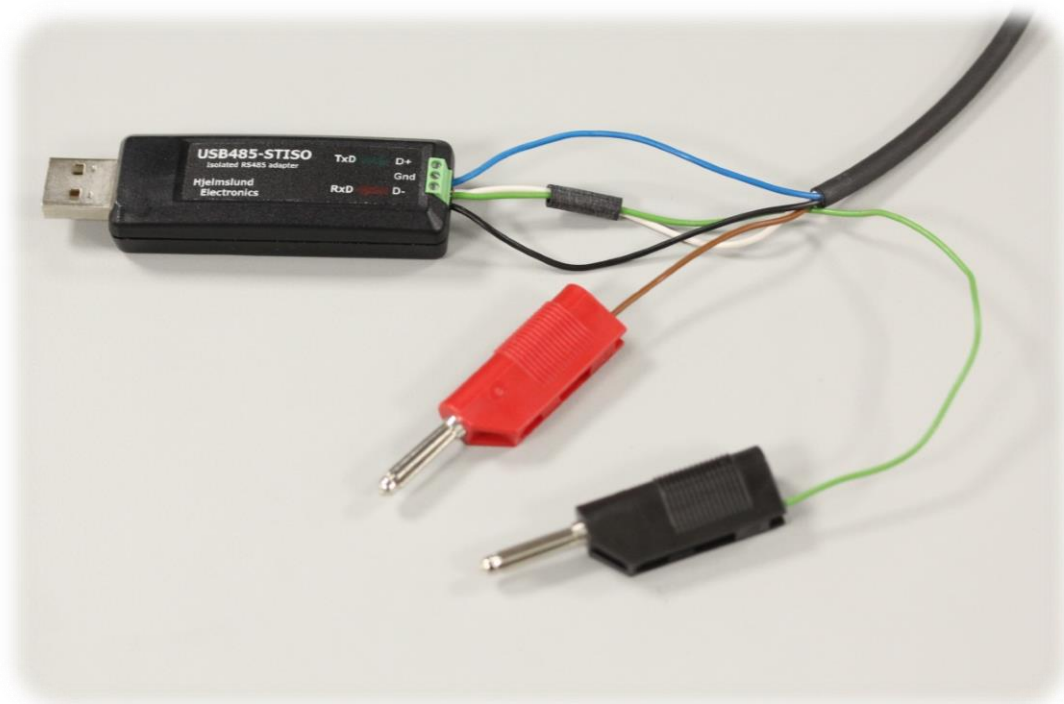
The name & port number that's automatically allocated to the USB to RS485 device can vary. **Make a note of the port number that the device is allocated.** Our example device is using "COM10" so this is the port number we would use to communicate with the inclinometer.

If the COM device symbol looks like this:  then you will need to troubleshoot the device driver problem. (A good place to start is the website for the manufacturer of the hardware).

Step 3: Connect the Inclinometer wires to the COM Port:

Full RS485 connections for the HPS inclinometer are as follows; note that the wire colours may vary depending on the cable you are using:

Front View of HPS Connector	HPS Pin Number	Example Cable's wire colour	HPS Wire Function	Connects to... (Function)
	1	Brown	+ve Power Input	+ve Supply (9 to 30V)
	2	White	0V Power input & RS485 GND	0V Supply & RS485 GND.
	3	Blue	RS485 +	D +
	4	Black	RS485 -	D -



Note the additional green wire connected to the Gnd terminal to allow HPS Pin 2 to connect to –Ve power.

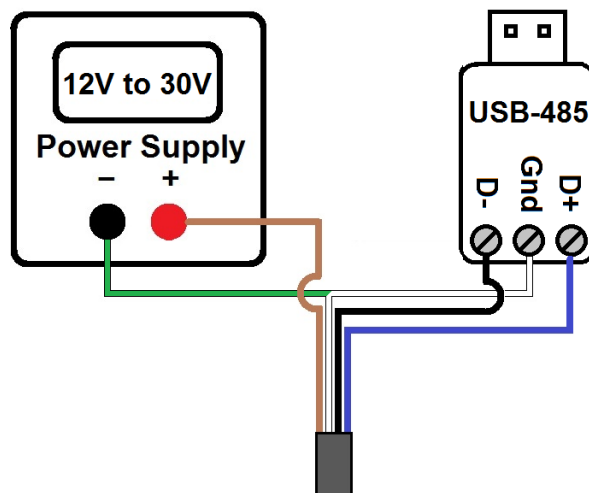
Some manufacturers invert the naming of their D- & D+ pins. You may need to swap the connections of HPS pin 3 & Pin 4 (which is safe to do, but do not change any other connections to avoid damage).

Step 4: Connecting the Inclinator to the Power Supply / Power Source:

The power source should be able to provide between 12V & 30V maximum, ensure it's switched off & connect HPS Pin 1 (brown in our example) to the +Ve node.

If you are using a battery or have no on/off option available then leave Pin 1 disconnected for now.

Connect Pin 2 (which is white & green in our example) to the -Ve node of the power source whilst it's still connected to the Gnd terminal of the RS485 adapter as shown below.



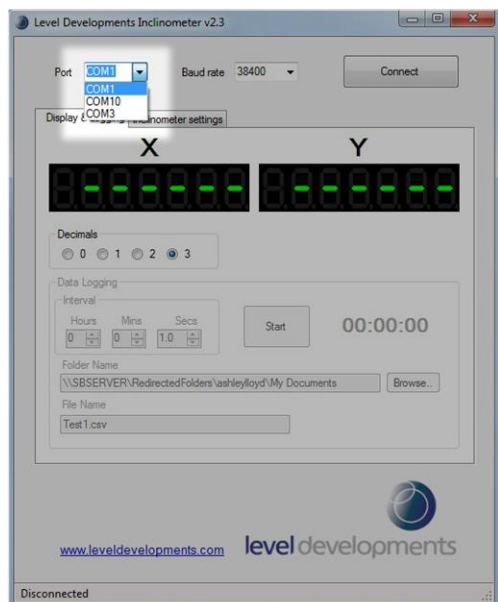
Once you've made all of the necessary connections you can switch on the power source or connect Pin 1 (brown) wire to "+" if using a battery.



Step 5: Connecting an Inclinometer to the Level Developments Inclinometer App:

We recommend using the inclinometer app before attempting to create your own more advanced commands, this ensures that you have the correct connections and your hardware is working as it should.

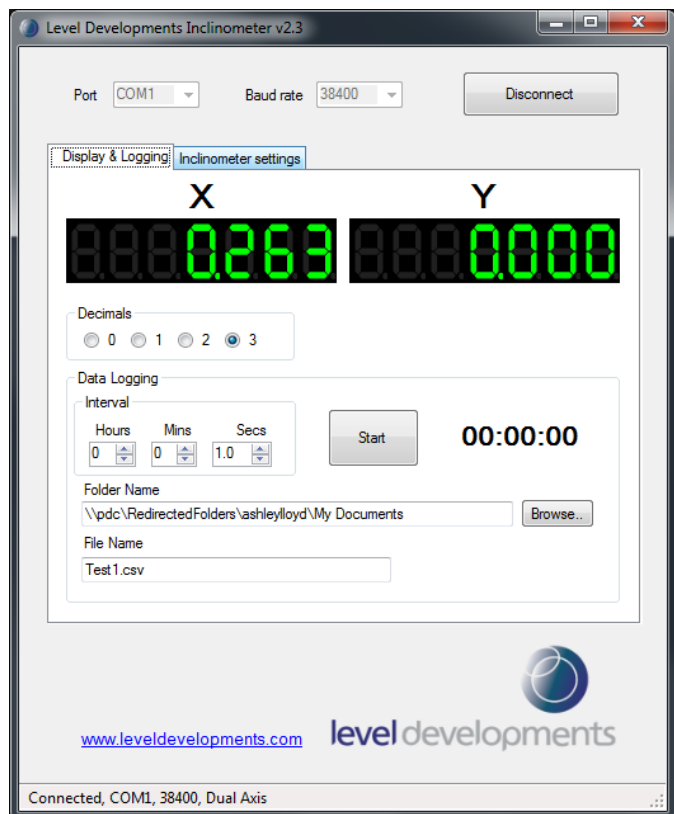
Download and install the application from our website:



Run the Inclinometer App and select the port number that was determined earlier in Step 2.

By default the inclinometers baud rate setting is 38400(bps), ensure this is selected and click on “Connect”.

You should now see angles being displayed on the screen.

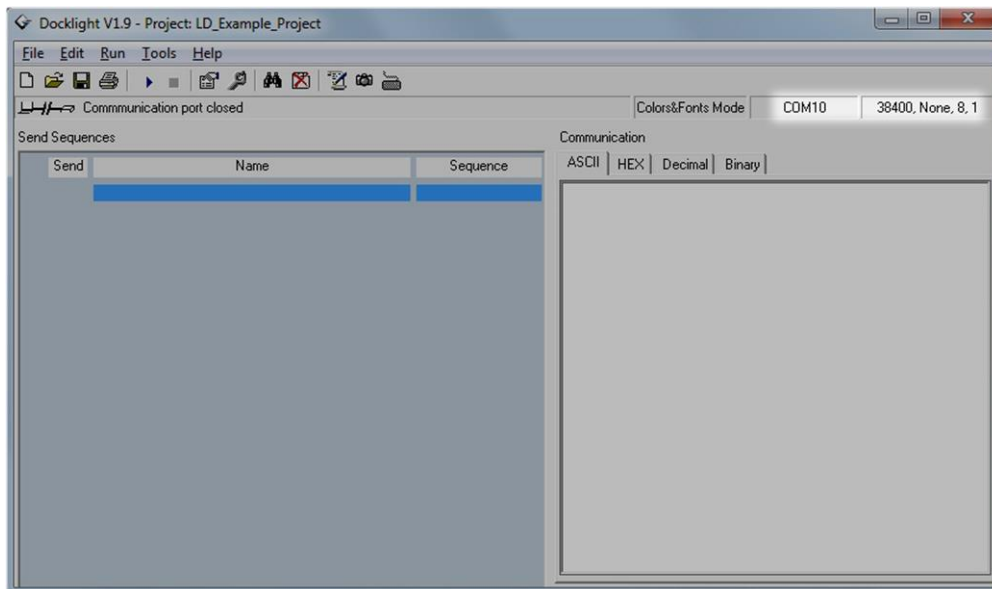


Step 6: Sending Your Own Commands Using an RS232 Terminal / Serial Monitor Program:

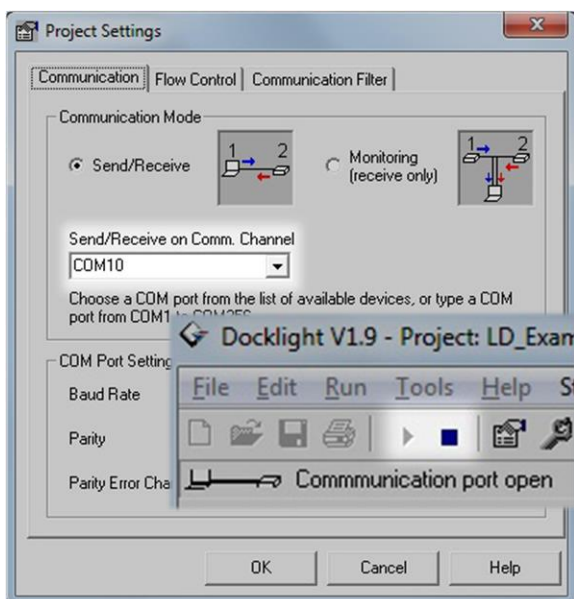
To create your own commands you will need a serial monitoring application. For the purpose of this demonstration we are using Docklight but there are many to choose from. *The layout and terminology used in your terminal program may vary.*

A free trial version of Docklight can be downloaded from <https://docklight.de> with some minor limitations. Please see their website for more information.

Open your application and locate the project settings window. In Docklight this can be accessed by double-clicking the highlighted area below or going to tools, project settings.



You can then change the COM channel (port number) to match the value determined in step 2.



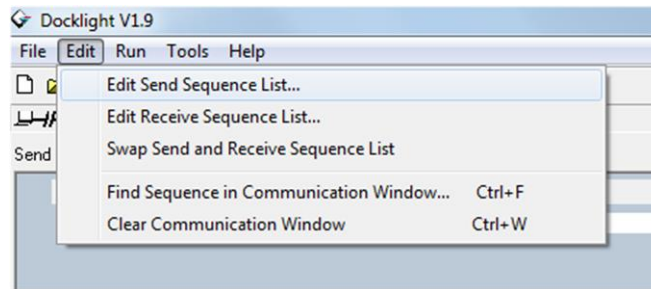
The default baud setting for all HPS sensors is 38400, with 8 data bits, 1 stop bit and no parity.

Click OK then open the port by clicking on the ► button:

Once the port is open, the ■ button should be visible as shown below:

The ■ button can then be used to close the port if required. (Note: the port can only be open in 1 application at a time).

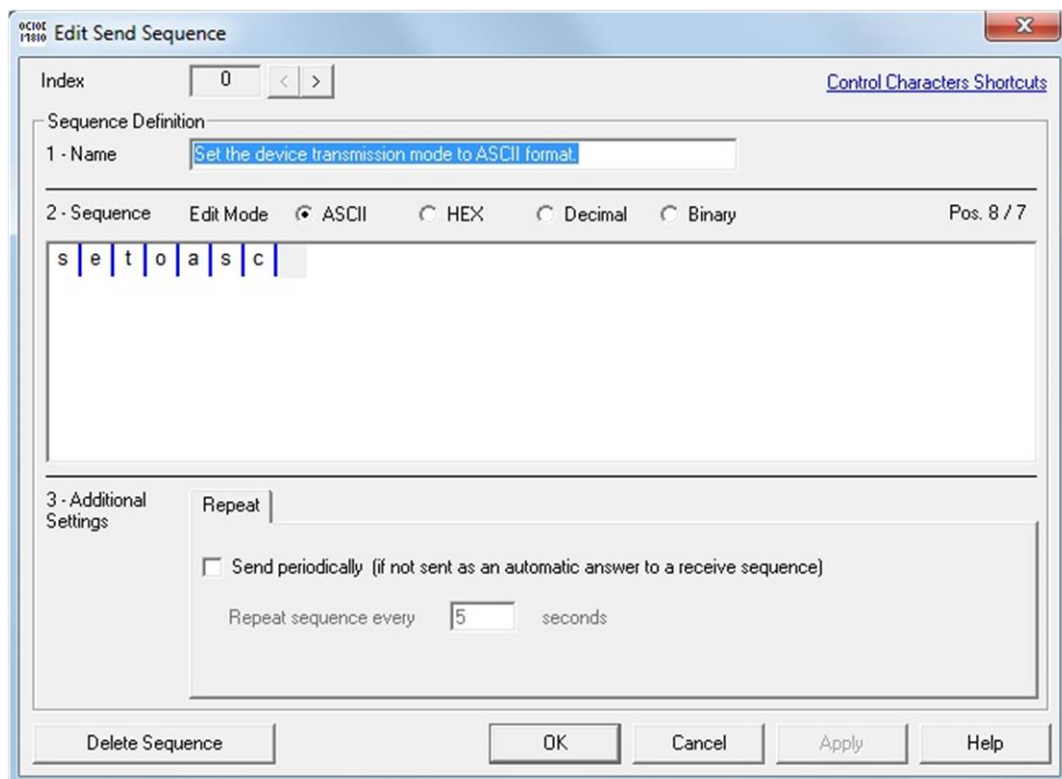
You can now begin to create the commands to send to the Inclinator. To do this go to Edit, Edit Send Sequence List...



This will open the window shown below. You can see that we've given our first command a description (highlighted) and created our first command in the sequence window.

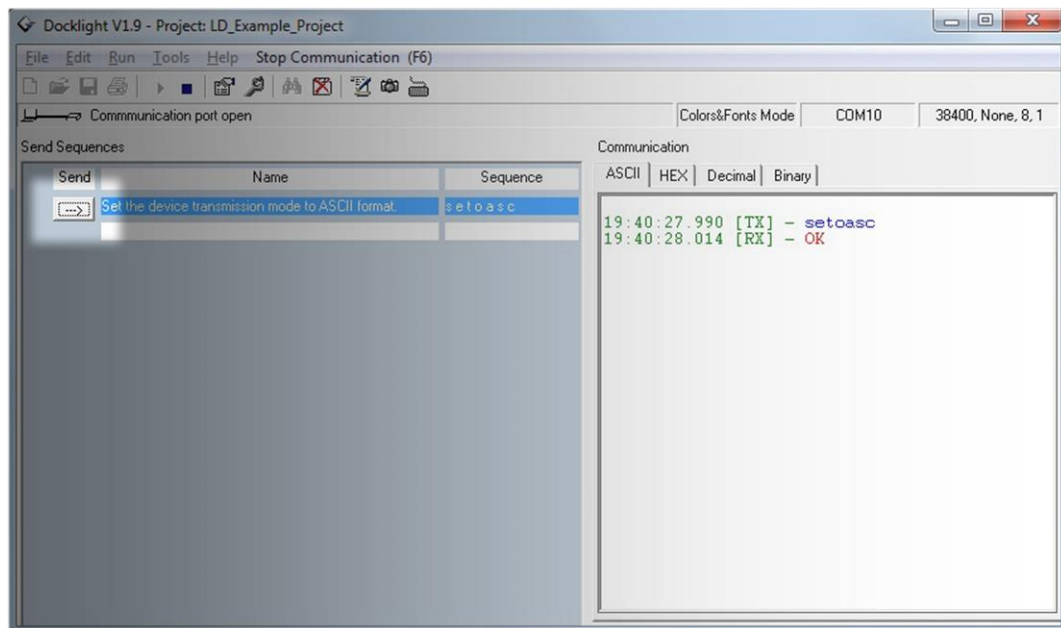
By default all HPS inclinometers are set to respond in 32bit signed integer mode which can't be read by eye, so the first command we will send to the device is "setoasc". This will change the output (response) mode to ASCII format.

Note that all send sequences in the LD command set must be 7 bytes long and in lower case.

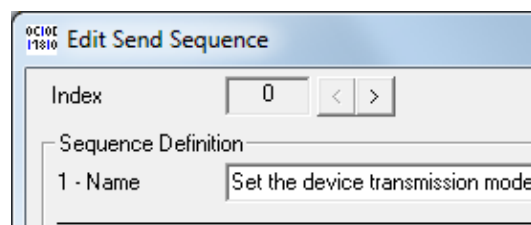


Once you have filled in the send sequence press OK.

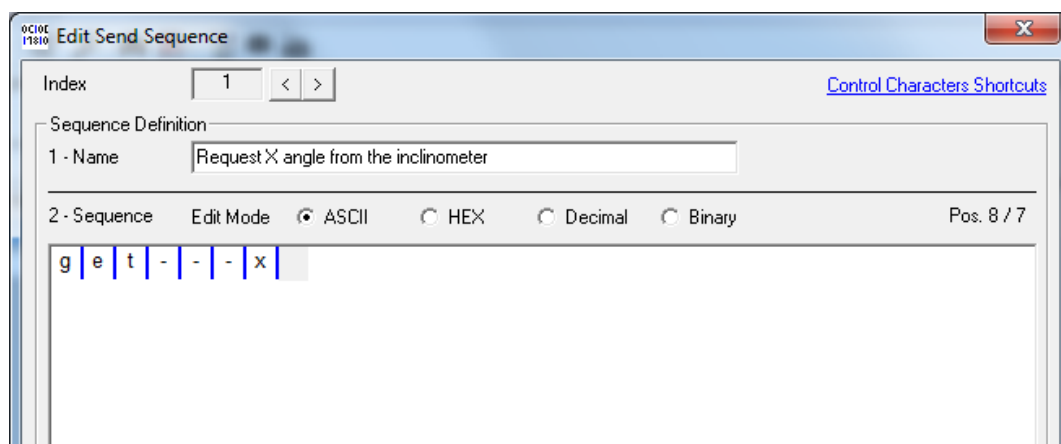
This will save the new command into the sequence list as shown below. You can now send the command to the Inclinometer by clicking on the “—>” button. This will print the command “setoasc” (Tx) into the monitor window & the inclinometer should respond (Rx) with “OK” to indicate success.



You can now create a 2nd command to request the angles from the Inclinometer. Open the “Edit Sequence List...” as shown before and click on the “>” button to go to a new blank command.



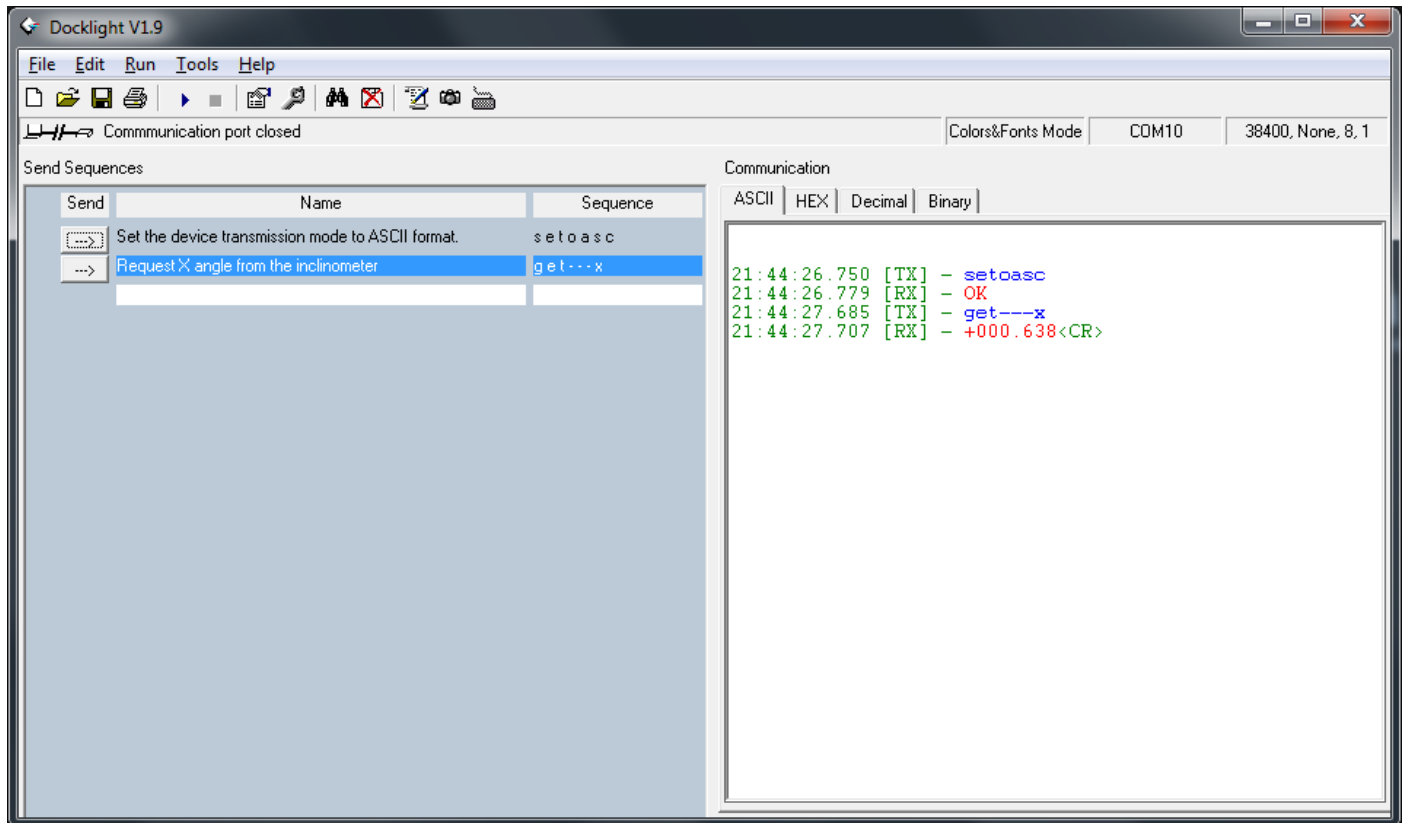
Create the new command “get---x” as shown below then click on OK.



Send the new command to Inclinator by clicking on the “—>” button.

The inclinometer should now respond with a 9 byte string in the following format:

±xxx.xxx<CR>



& That's It!

You can now use the “get-x&y” command to read angles from your Inclinator and these techniques to build on your collection of send sequences using the full list of commands as described on the product datasheet.

If you need more information or have a query relating to the use of your HPS inclinometer, please get in touch with tech@leveldevelopments.com & will be happy to assist you.