

Hello Angles...



A First Use Guide to the VS Product Series:

RS232 Interface with
LD Standard Communication Protocol &
Analogue 4-20mA Output Signals.

Who Is This Guide For?

The purpose of this guide is to show the correct procedure for connecting and using the VS inclinometer with a Windows PC (&/or) Ammeter(s) for the first time.

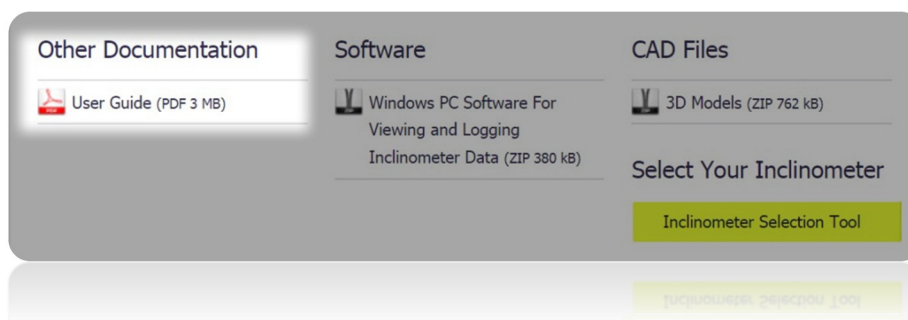
This document can be followed by users of all skill levels including absolute beginners.

What products can I apply these instructions to?

This guide can be used for any VS products that feature the 4mA to 20mA output option. The part number of these products will end in **6** e.g. “VS-XX-X-X-**6**”



Note: If you are using any other product please search for your full part number on our website & download the user guide that specifically applies to your device from the product’s individual web page as shown below:



Additional Information:



Take care while making all connections. To avoid damaging your product do not allow any wires to make contact with anything you do not intend (especially a source of power).

Once your connections have been made and the unit is responding correctly, please refer to the product datasheet for the full command list(s), more information about the communication protocol & information on converting the analogue outputs into angles.

Step 1: Ensure You Have a Working COM Port (Hardware).

Many PCs and Laptops have a **built-In**¹ COM (communication) port which looks like this:



The above connector is known as a DB-9 Male & shouldn't be confused with "VGA" which looks like this:



If your PC or laptop doesn't have this connection you can buy a **separate**² USB to COM adapter. For this guide we have used the "StarTech ICUSB232DB25" which is inexpensively available online:

**Step 2: Ensure You Have a Working COM Port (Software):**

On your computer go to "Device Manager" which can be accessed via the control panel:



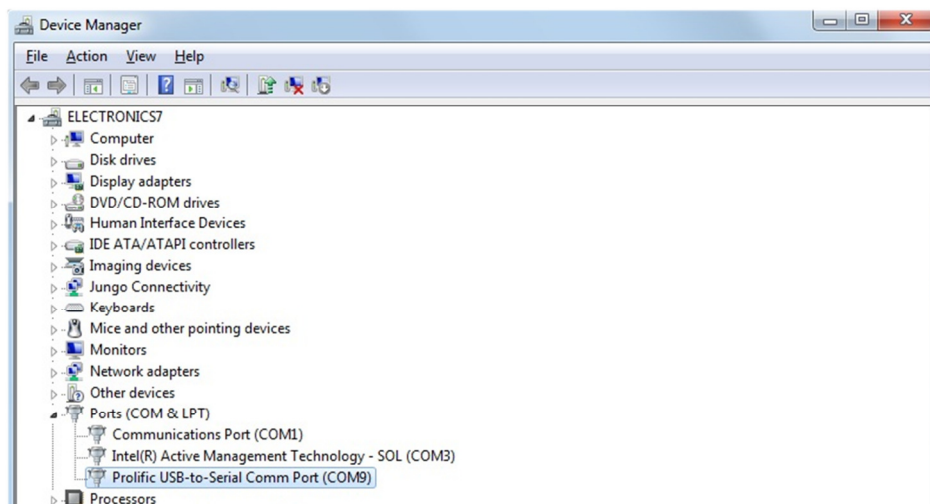
¹ For **Built-In** COM ports:

In most cases the driver will be installed and working already. Typically this will be called “Communications Port (COM1)” meaning that “COM1” is the port we would use to communicate with the inclinometer.




² If you have bought a **separate** USB to COM Port:

Follow the manufacturer’s instructions to install your driver and check that it has installed properly.



The name & port number that’s automatically allocated to this device can vary. **Make a note of the port number that the device has been allocated.** Our example USB to COM device is using “COM9” so this is the port number we would use to communicate with the inclinometer.

^{1 & 2} For both **Built-in** or **Separate** types:

If the COM device symbol looks like this:  then you will need to troubleshoot the device driver problem. (A good place to start is the website for the manufacturer of the hardware).

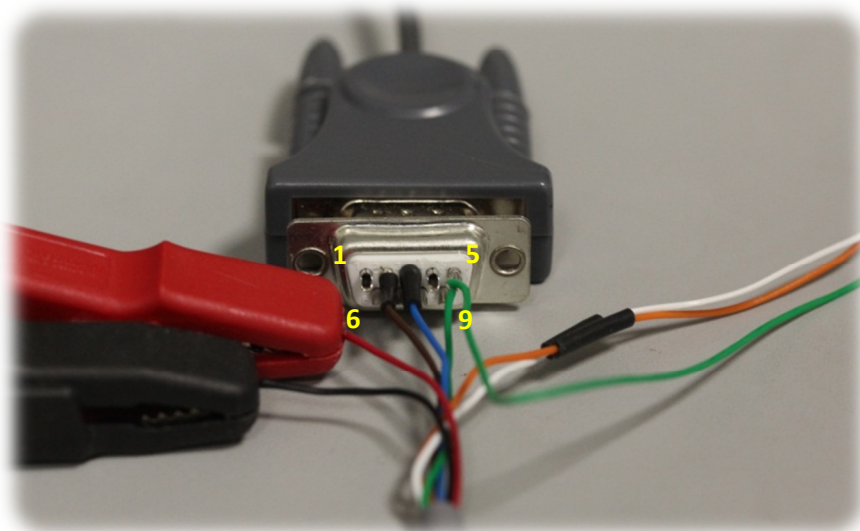
Step 3: Connect the Inclinometer wires to the COM Port:

Full connections for the VS inclinometer are as follows; note that the wire colours for the connector ("C") model may vary depending on the cable you are using:

VS-XX-C-X-X Pin Number	VS-XX-P-X-X Wire Colour	VS Pin/Wire Function	Connects to... (Function)	...On DB-9 Pin Number
Pin 1	Red	+ve Power Input	+ve Supply (12 to 30V)	NA
Pin 2	Black	0V Power Input	0V Supply	NA
Pin 3	Green	RS232 GND & Signal GND	RS232 GND & Ammeter GNDs	5
Pin 4	Orange	X Axis Output (milliamps)	Ammeter 1	NA
Pin 5	White	Y Axis Output (milliamps)	Ammeter 2	NA
Pin 6	Brown	RS232 Transmit	RS232 Receive	2
Pin 7	Blue	RS232 Receive	RS232 Transmit	3

The RS232 / 4-20mA outputs can operate separately (continued overleaf).

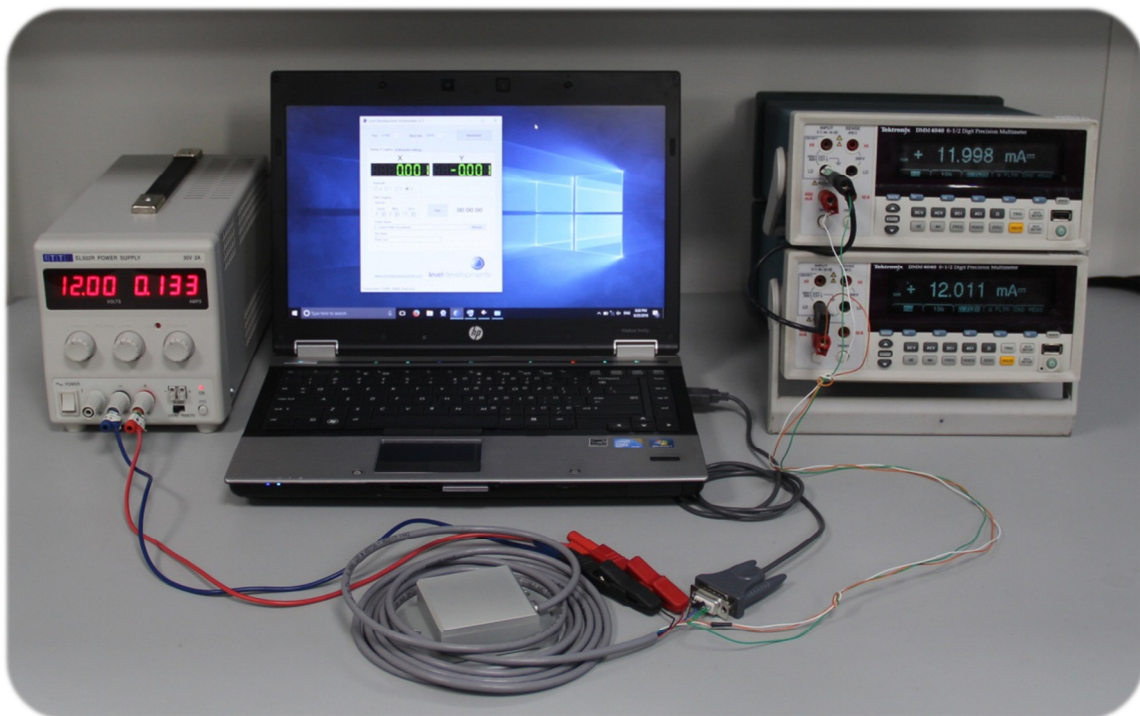
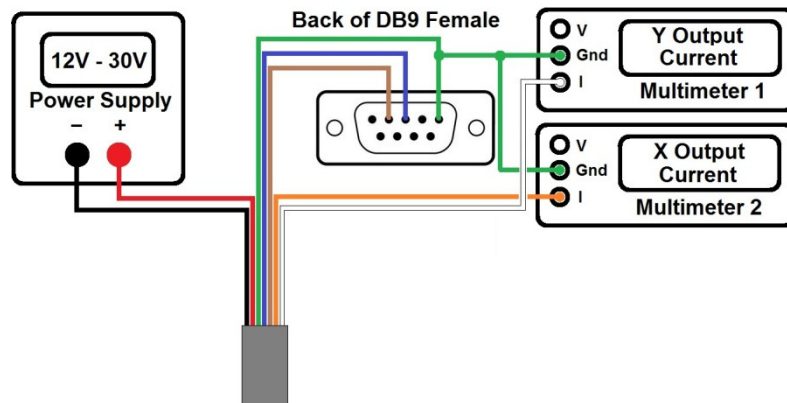
As the built-in COM port / USB to COM device is fitted with a male type connector you will need a female type connector to make the necessary solder connections as shown below:



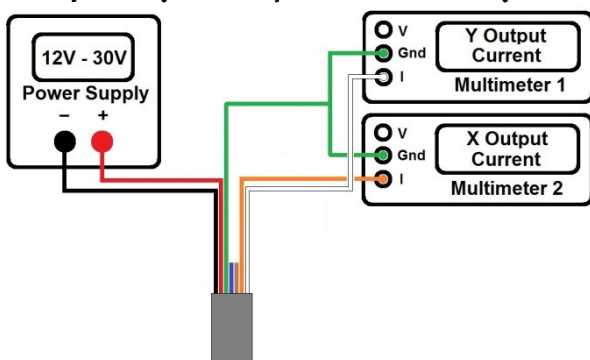
*Back side of the female DB-9 connector & the required connections for RS232 communications.
Note also that pin 5 of the DB-9 has 2 green wires fitted to allow connection to the Ammeters.*

Step 4: Connecting the Inclinator to the Power Source and Ammeters:

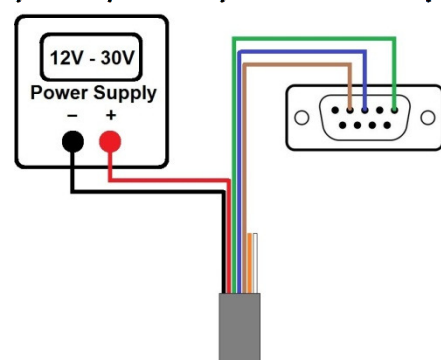
Ensure the power source is switched off. Connect the Inclinator's red wire to the +Ve node & connect the black wire to the 0V (-Ve) node, then the X and Y outputs to the Ammeters as shown below:



If you require only the 4-20mA outputs:



If you require only the RS232 output:



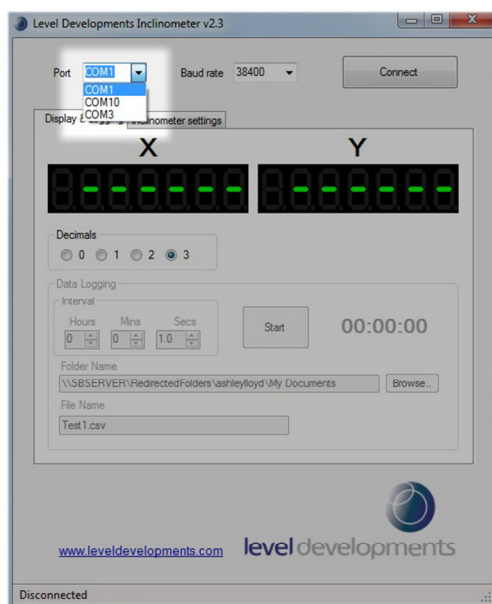
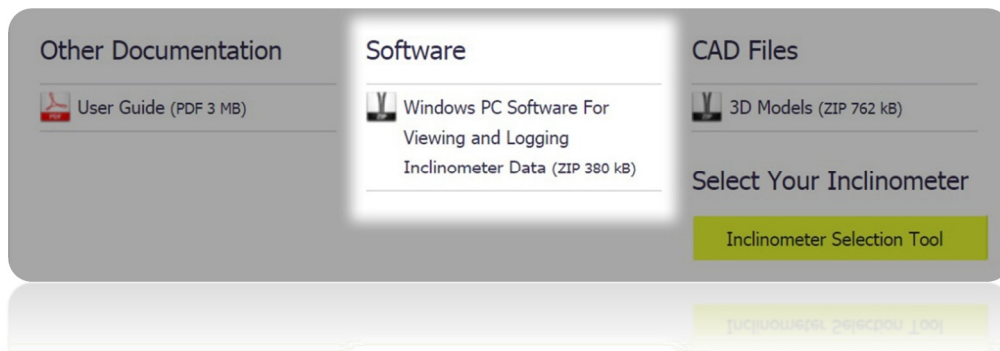
Once you've made all of the necessary connections you can switch on the power source.

See Page 5 of the product datasheet for information on converting the analogue signals into angles.

Step 5: Connecting an Inclinometer to the Level Developments Inclinometer App:

We recommend using the inclinometer app before attempting to create your own more advanced commands, this ensures that you have the correct connections and your hardware is working as it should.

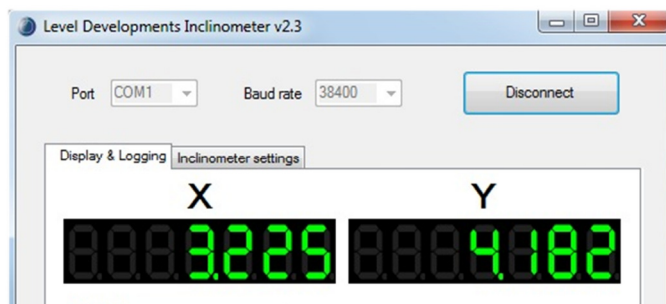
Download and install the application from your products individual web page:



Run the Inclinometer App and select the port number that was determined earlier in Step 2.

By default the inclinometers baud rate setting is 38400(bps), ensure this is selected and click on “Connect”.

You should now see angles being displayed on the screen.

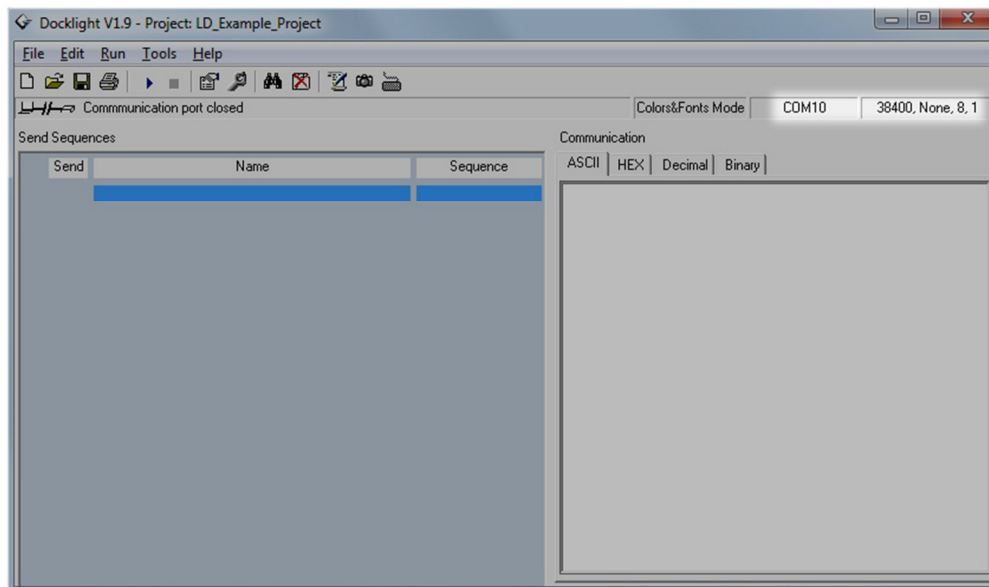


Step 6: Sending Your Own Commands Using an RS232 Terminal / Serial Monitor Program:

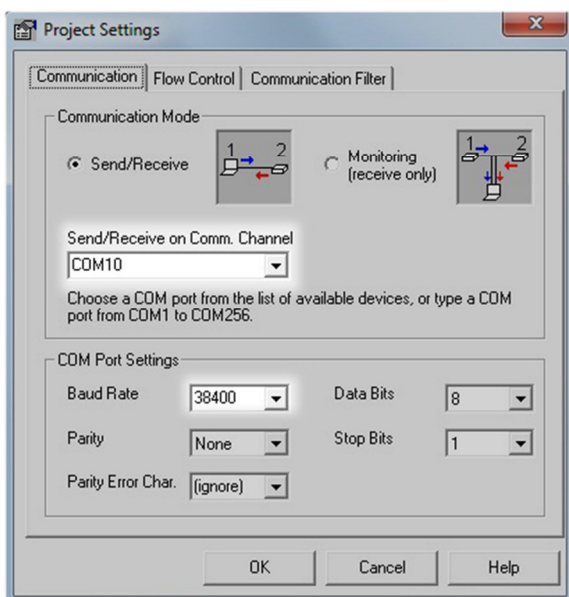
To create your own commands you will need a serial monitoring application. For the purpose of this demonstration we are using Docklight but there are many to choose from. *The layout and terminology used in your terminal program may vary.*

A free trial version of Docklight can be downloaded from <https://docklight.de> with some minor limitations. Please see their website for more information.

Open your application and locate the project settings window. In Docklight this can be accessed by double-clicking the highlighted area below or going to tools, project settings.



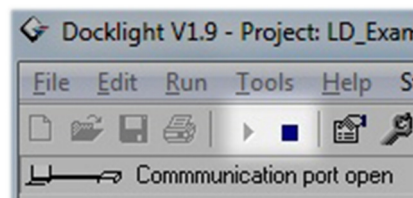
You can then change the COM channel (port number) to match the value determined in step 2.



The default baud setting for all VS sensors is 38400, with 8 data bits, 1 stop bit and no parity.

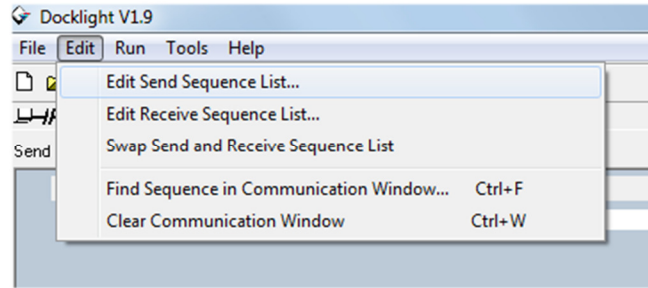
Click OK then open the port by clicking on the ► button:

Once the port is open, the ■ button should be visible as shown below:



The ■ button can then be used to close the port if required. (Note: the port can only be open in 1 application at a time).

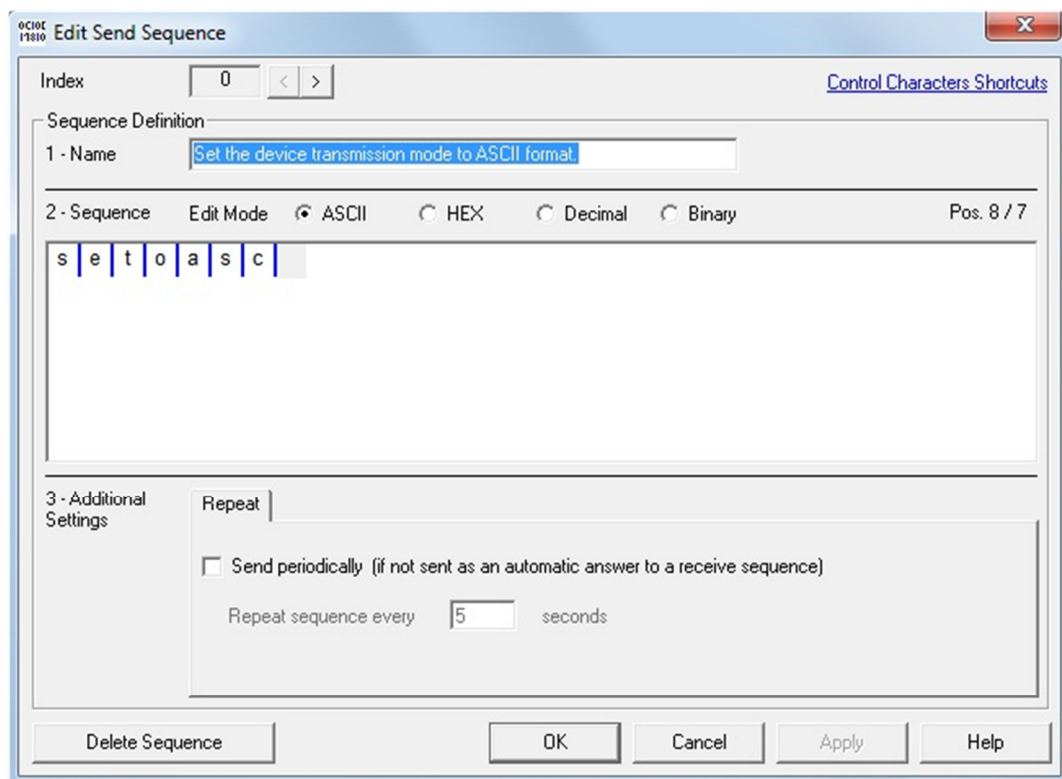
You can now begin to create the commands to send to the Inclinator. To do this go to Edit, Edit Send Sequence List...



This will open the window shown below. You can see that we've given our first command a description (highlighted) and created our first command in the sequence window.

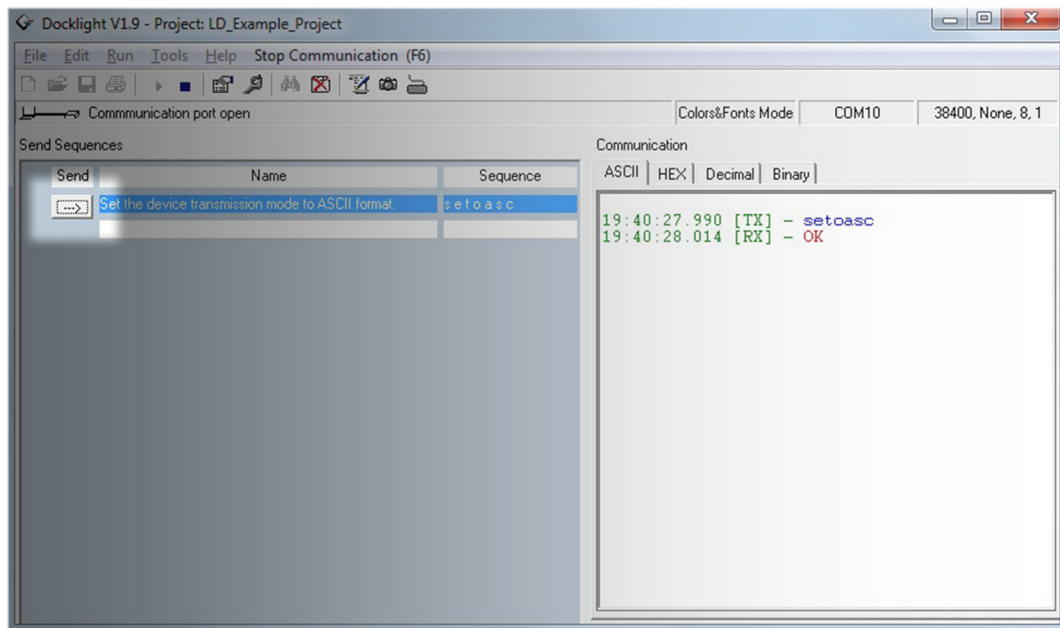
By default all VS inclinometers are set to respond in 32bit signed integer mode which can't be read by eye, so the first command we will send to the device is "setoasc". This will change the output (response) mode to ASCII format.

Note that all send sequences in the LD command set must be 7 bytes long and lower case.

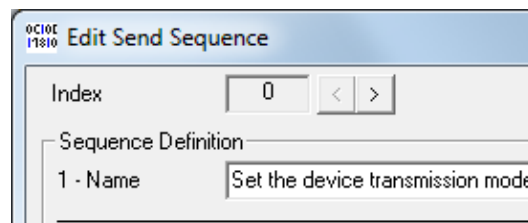


Once you have filled in the send sequence press OK.

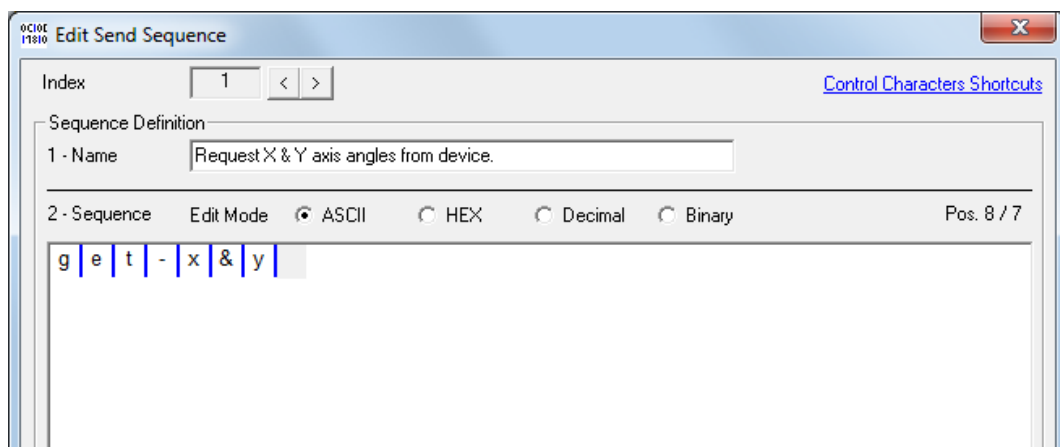
This will save the new command into the sequence list as shown below. You can now send the command to the Inclinometer by clicking on the “—>” button. This will print the command “setoasc” (Tx) into the monitor window & and the inclinometer should respond (Rx) with “OK” to indicate success.



You can now create a 2nd command to request the angles from the Inclinometer. Open the “Edit Sequence List...” as shown before and click on the “>” button to go to a new blank command.



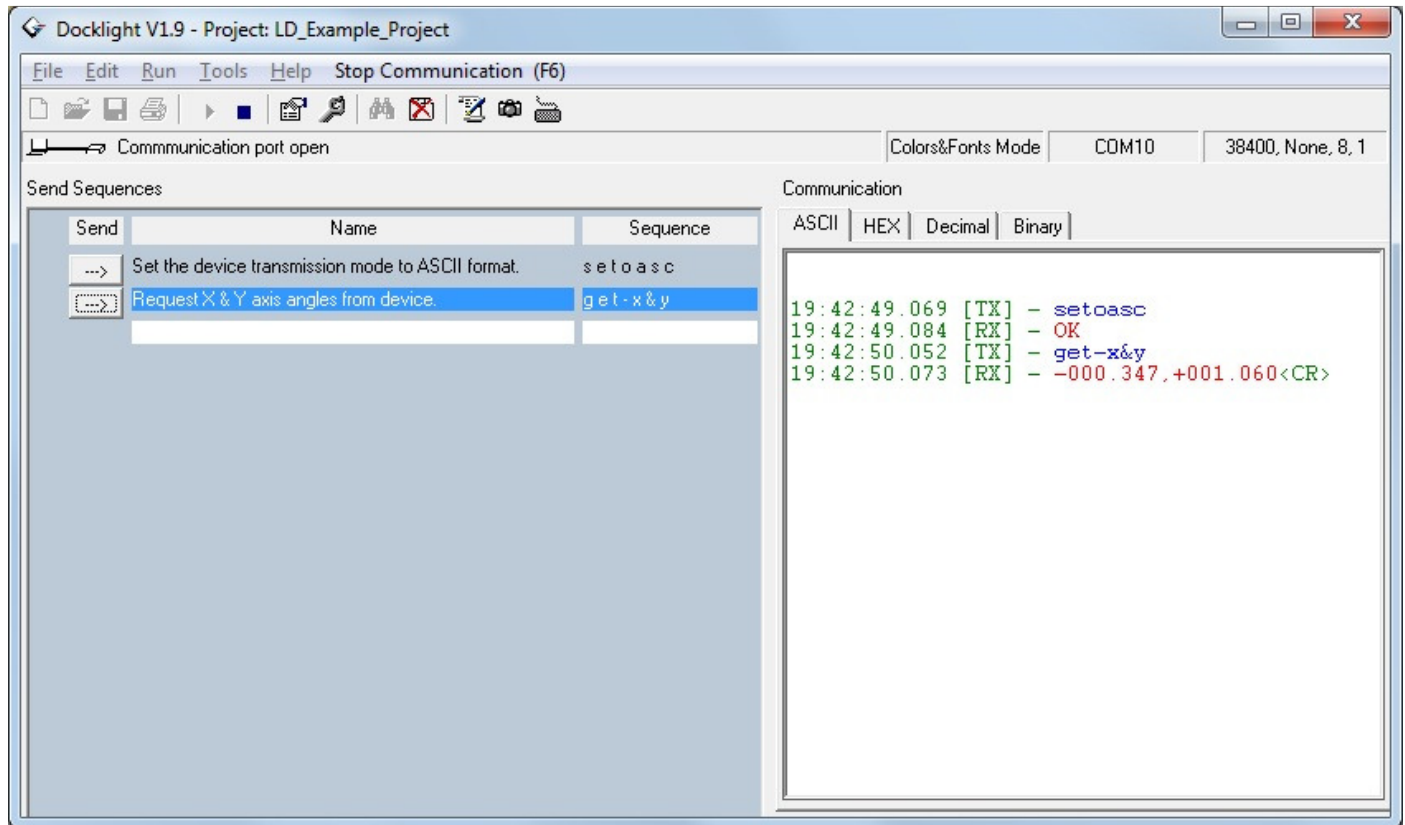
Create the new command “get-x&y” as shown below then click on OK.



Send the new command to Inclinator by clicking on the “—>” button.

The inclinometer should now respond with an 18 byte string in the following format:

±xxx.xxx,±yyy.yyy<CR>



& That's It!

You can now use the “get-x&y” command to read angles from your Inclinator and these techniques to build on your collection of send sequences using the full list of commands as described on the product datasheet.

If you need more information or have a query relating to the use of your VS inclinometer, please get in touch with tech@leveldevelopments.com & will be happy to assist you.